

BE MOBILE !

EXCHANGE PROGRAMS PRESENTATION

13TH DECEMBER | 13.15 - 14.15 / ROOM B2.2.1
ALL PROGRAMS

14TH DECEMBER | 13.15 - 14.15 / ROOM B2.2.1
MEDEs PROGRAM

16TH DECEMBER | 13.15 - 14.15 / ROOM B2.1.1
USA FASHION PROGRAM

EXCHANGE PROGRAMS PROMOTION WEEK

12TH-16TH DECEMBER | 13.15 - 14.15 / HALL B2
INFORMATION DESKS
COME AND MEET US FOR MORE INFO ABOUT THE
EXCHANGE PROGRAMS AND THE PARTNER SCHOOLS



An abstract geometric pattern consisting of white lines connecting red dots, forming a network-like structure on the right side of the image. The dots are small red circles, and the lines are thin white lines. The pattern is dense and interconnected, with some dots having multiple lines radiating from them.

MOBILITY PROGRAM

What is the international mobility program?



EUROPE
ERASMUS+

33 PARTNER COUNTRIES
151 PARTNER SCHOOLS

SCHOLARSHIPS GARANTED
BY ERASMUS+ PROGRAM



EXTRA EU
BILATERAL AGREEMENTS

WORLDWIDE
63 PARTNER SCHOOLS

SCHOLARSHIPS GARANTED
BY MIUR AND POLITECNICO DI MILANO FOUNDS

What is the international mobility program?

ERASMUS

EXCHANGE FROM 3 UP TO 12 MONTHS **WITHIN UE** AT BSc OR MSc LEVEL

EXTRA - EU

EXCHANGE FROM 3 UP TO 12 MONTHS **OUTSIDE UE** ONLY AT MSc LEVEL

MEDES

EXCELLENCE PROGRAM WITH 2 YEARS OF EXCHANGE AT 2nd YEAR BSc AND 1st MSc LEVELS

PHILA U

PHILADELPHIA&POLIMI INTERNATIONAL **MASTER IN FASHION DESIGN**

DOUBLE DEGREES

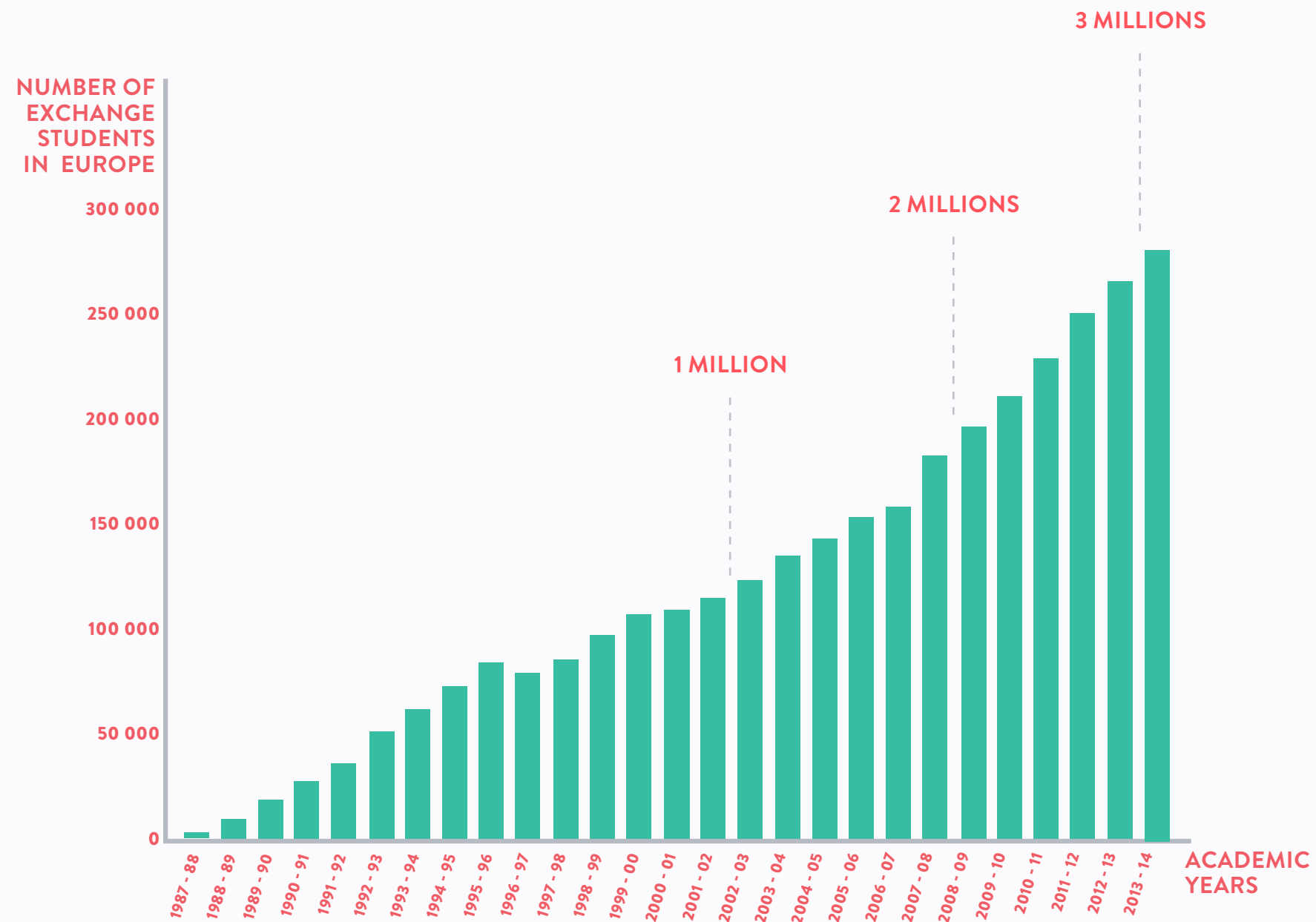
PROGRAM TO OBTAIN A **DOUBLE DEGREE** (POLIMI & PARTNER SCHOOL) WAT MSc LEVEL

[HTTP://WWW.POLIMI.IT/STUDENTI/ESPERIENZE-ALLESTERO/MOBILITA-PER-STUDIO/DOPPIE-LAUREE/BANDO-E-MODALITA-DI-CANDIDATURA/](http://www.polimi.it/studenti/esperienze-allestero/mobilita-per-studio/doppie-lauree/bando-e-modalita-di-candidatura/)

What is the international mobility program?



The success of the erasmus program



Personal achievements



IMPROVE
ENGLISH

LEARN
ANOTHER LANGUAGE



LEARN
GET BY
ALONE



EXPLORE
THE WORLD FROM
ANOTHER
PERSPECTIVE

Professional achievements



LEARN A DIFFERENT
APPROACH TO DESIGN



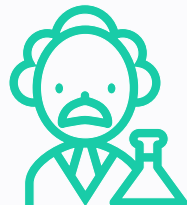
BUILD A NETWORK



EXPERIMENT
NEW COURSES



COMPANIES ABROAD



FOREIGN PROFESSORS



WORK ABROAD

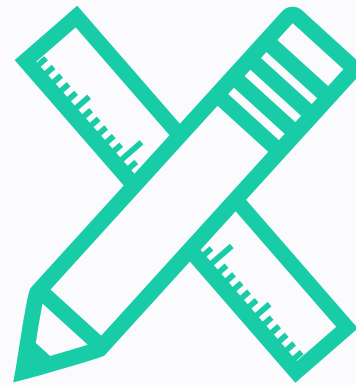


STAGE



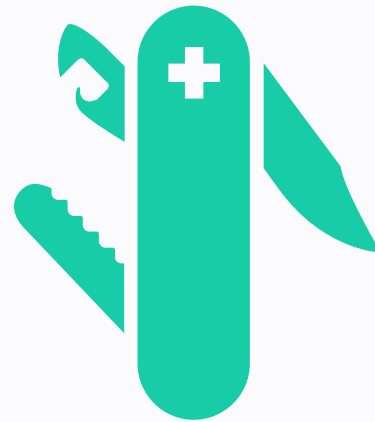
THESIS ABROAD

Professional and academic opportunities



STUDY ABROAD ALUMNI FELT THEIR
STUDIES ABROAD HELPED THEM BUILD
VALUABLE SKILLS
FOR THE JOB MARKET

Professional and academic opportunities



STUDY ABROAD STUDENTS REPORTED THAT
THE EXPERIENCE ALLOWED THEM
TO BETTER ADAPT
TO DIVERSE WORK ENVIRONMENTS

Professional and academic opportunities



EMPLOYERS SAID
STUDY ABROAD IS VALUABLE
IN ANY INDIVIDUAL'S CAREER

Professional and academic opportunities



STATISTICS SHOW THAT AFTER GRADUATION
STUDENTS WITH AN EXPERIENCE ABROAD
FIND JOBS BEFORE AND MORE EASILY
COMPARED TO THEIR COLLEAGUES

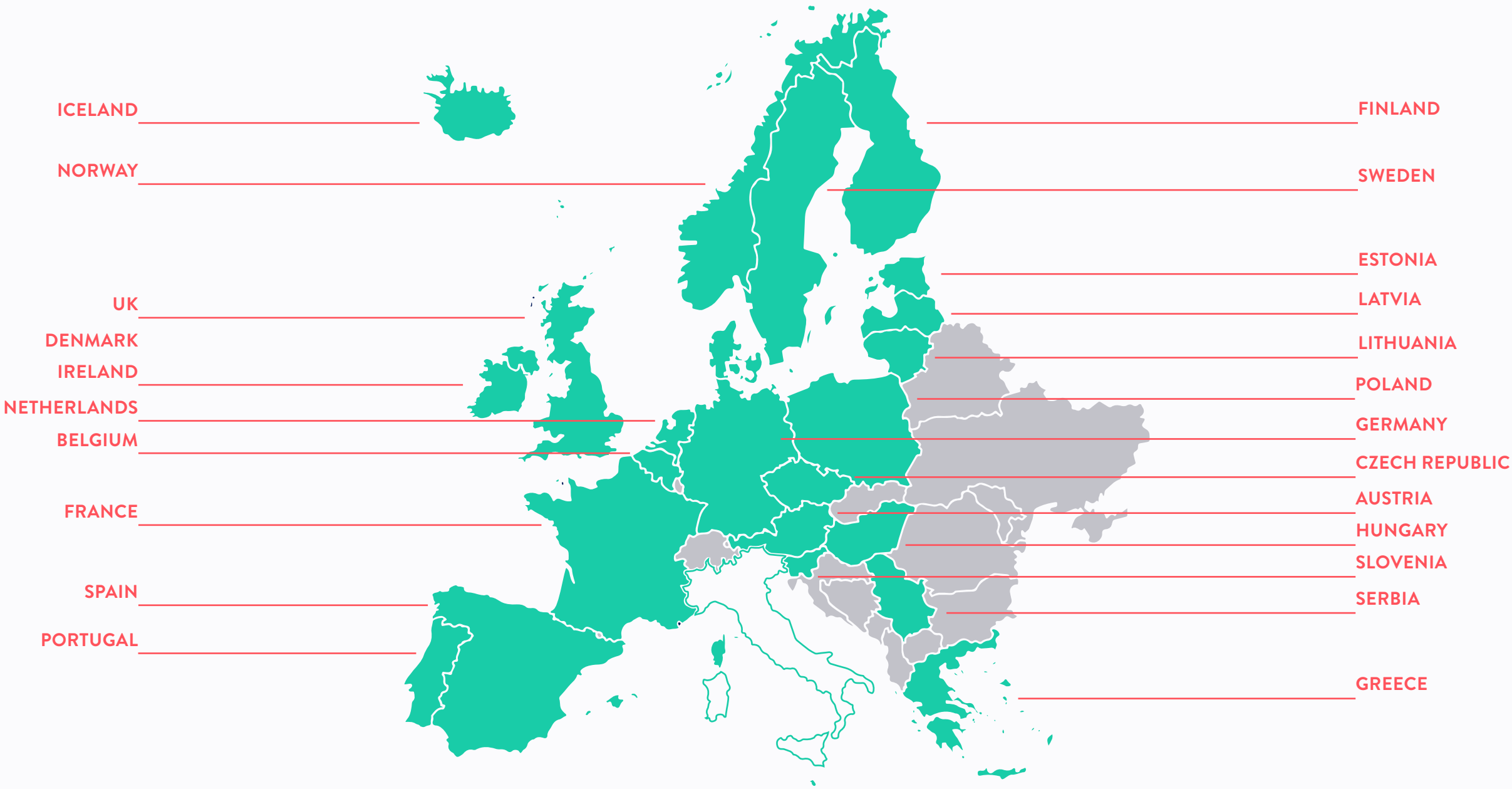


COUNTRIES

Build an international Network



Europe from West to East



Europe

NORWAY



NETHERLANDS



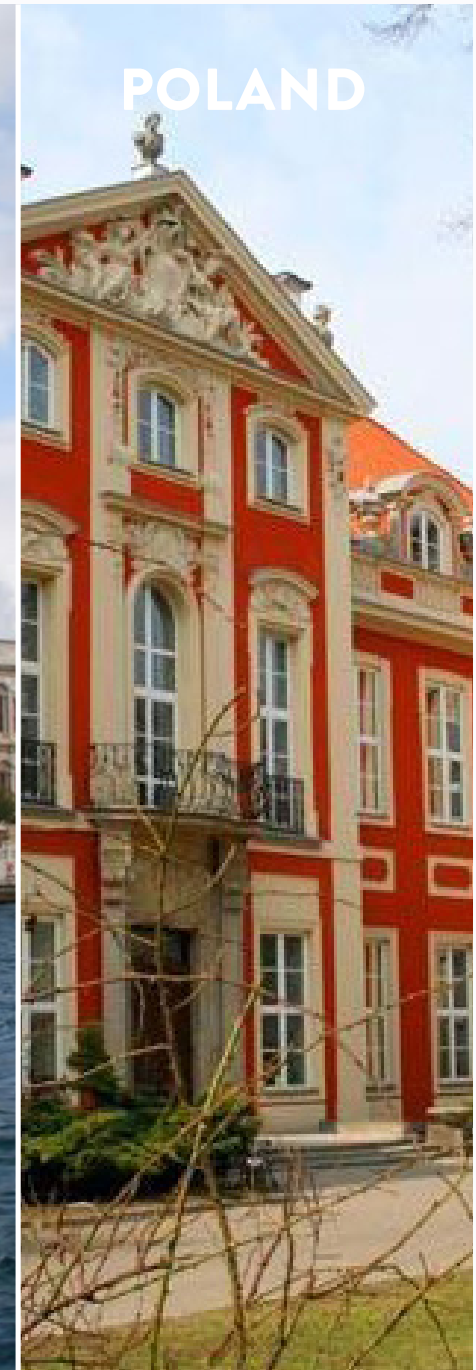
AUSTRIA



TURKEY



POLAND



America from North to South



America

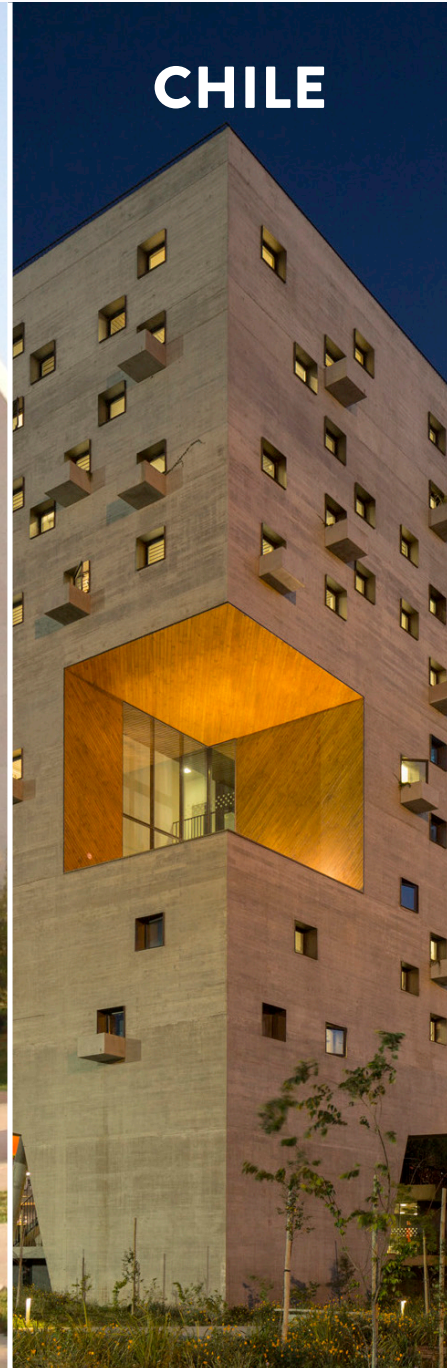
BRAZIL



MEXICO



CHILE



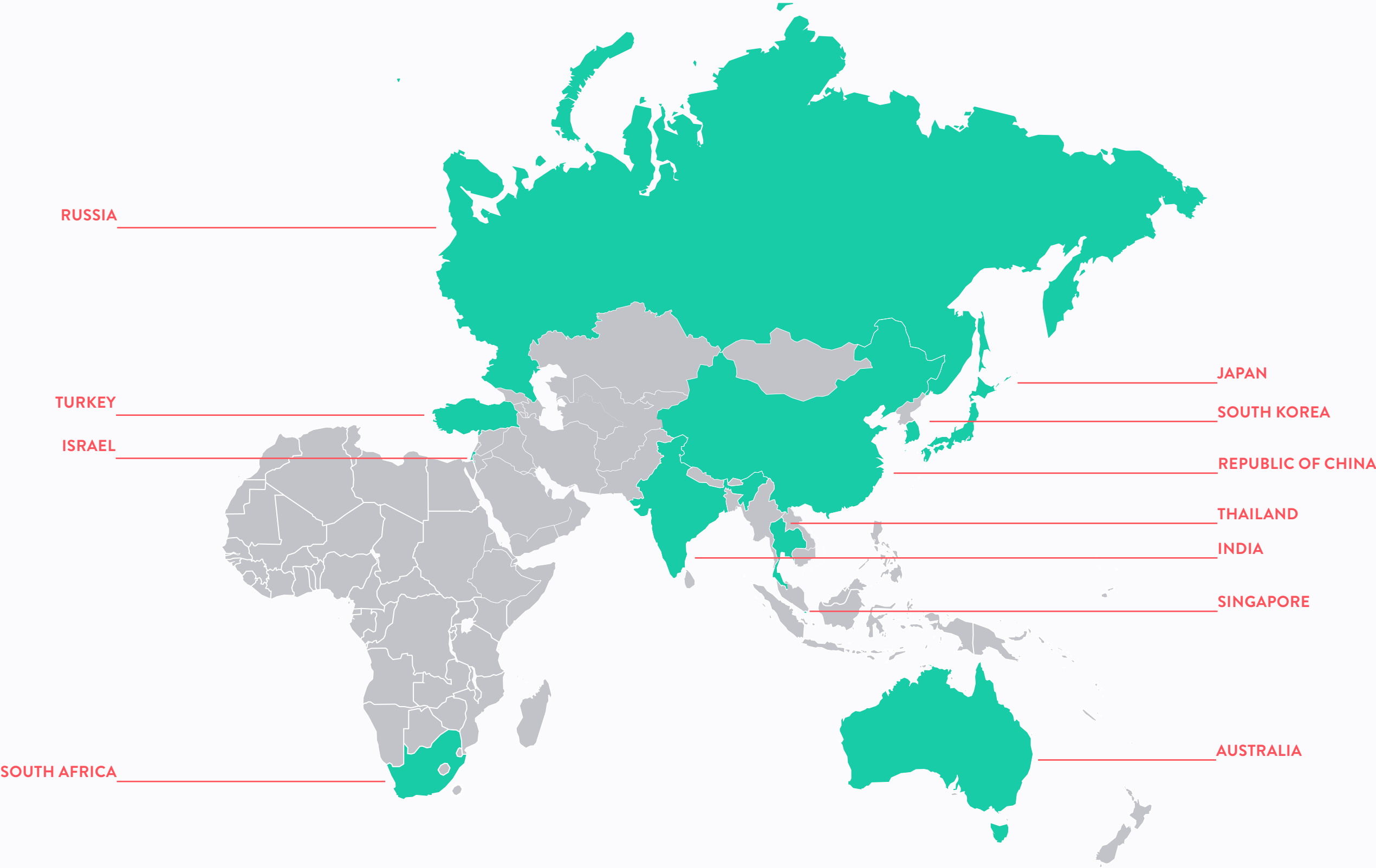
CANADA



ARGENTINA



Africa, Asia, Oceania



Africa, Asia, Oceania

**SOUTH
COREA**



**REPUBLIC
OF CHINA**



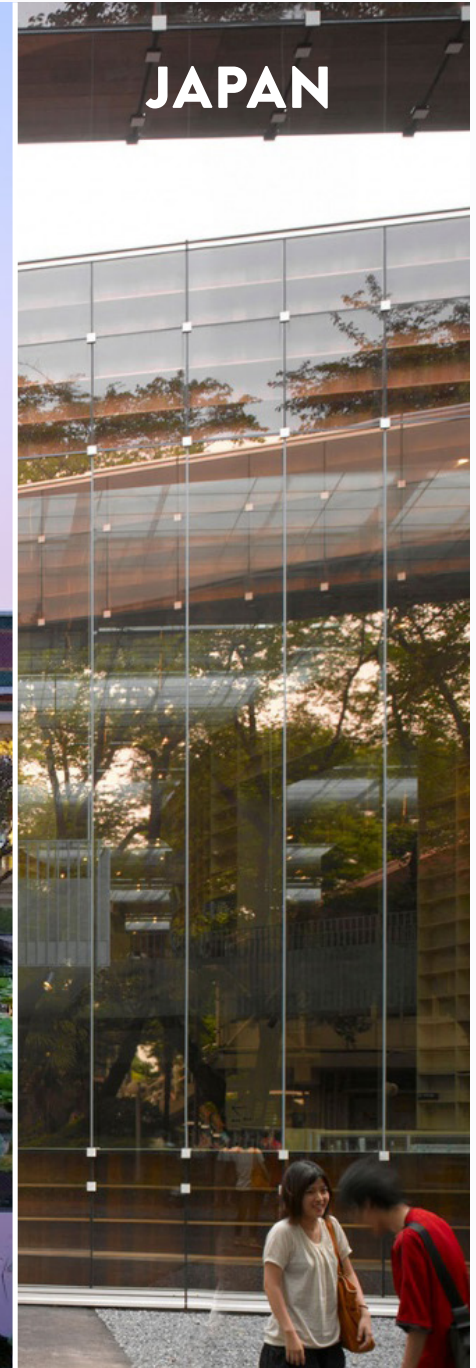
AUSTRALIA



THAILAND



JAPAN



Hints and tips



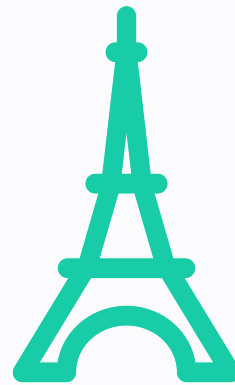
DO NOT UNDERESTIMATE
LITTLE SCHOOLS AND UNCOMMON AREAS
BECAUSE OFTEN THEY OFFER BETTER SUPPORT,
ADVANCED FACILITIES AND YOU MAY CREATE
UNEXPECTED LINKS FOR YOUR FUTURE

Hints and tips



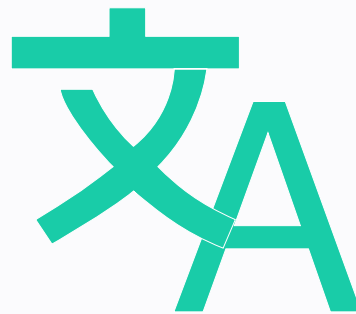
LEAVING DOES NOT MEAN LOSING ONE SEMESTER
COURSES TAKEN ABROAD ARE RECOGNIZED
BY THE SCHOOL, OF COURSE YOU NEED TO KEEP IN
CONTACT WITH THE POLIMI PROMOTER

Hints and tips



THERE IS LESS POSSIBILITY TO ENTER IN SCHOOLS WITH A
HIGH NUMBER OF REQUESTS.
YOU SHOULD CONSIDER YOUR CHOICE ACCORDING TO
YOUR GRADES (MEDIA) OTHERWISE
YOU WILL LOSE THE OPPORTUNITY TO HAVE A SEAT
CHECK OUR LIST WITH THE MOST REQUESTED UNIVERSITIES

Hints and tips



COURSES CAN BE DELIVERED IN ENGLISH BUT
ALWAYS CHECK ON THE WEB SITE OF THE SCHOOL

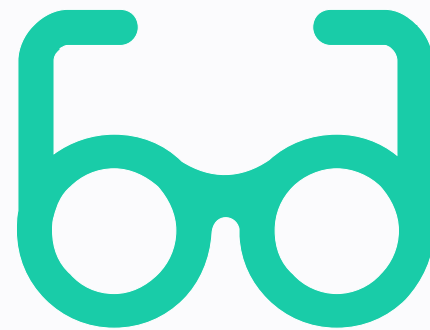
IT IS ALSO POSSIBLE TO
ATTEND LANGUAGE COURSES
OFFERED BY POLITECNICO BEFORE DEPARTURE

Hints and tips



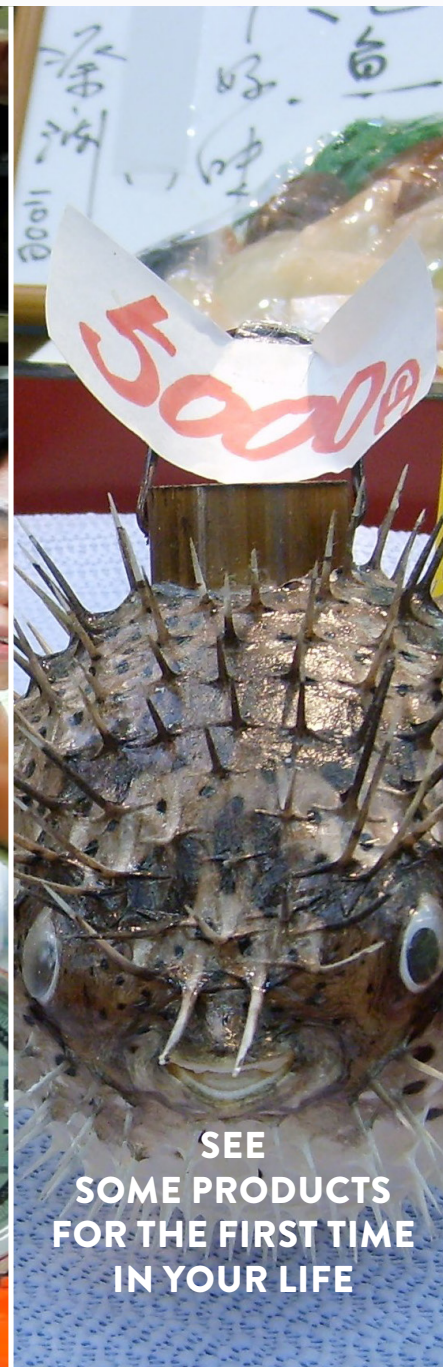
CHOOSE SCHOOLS ASKING FOR
LANGUAGE CERTIFICATES
IF YOU ALREADY HAVE ONE IN YOUR POCKET

Hints and tips



TO KNOW HOW WAS THE EXCHANGE
EXPERIENCE OF YOUR COLLEAGUES
READ THE REPORTS
ON THE SCHOOL WEBSITE

The essence of an experience lays in the little things



Make your life more savoury





HOW TO PARTECIPATE TO THE MOBILITY PROGRAM

Who?

ANY STUDENT
BOTH ITALIAN AND FOREIGNER
REGULARLY ENROLLED AT POLIMI

BSc STUDENTS (LAUREA)
MSc STUDENTS (LAUREA MAGISTRALE)

STUDENTS ENROLLED IN INDIVIDUAL COURSES WAITING TO ENTER IN THE MSc

When?

YEAR OF APPLICATION		YEAR OF MOBILITY				
CURRENTLY ENROLLED IN	STUDY COURSE	EXCHANGE PERIOD	SEMESTER	STUDY COURSE	TYPE	
BSc STUDENTS	1st YEAR	PRODUCT INTERIOR FASHION COMMUNICATION	2° YEAR	1° and/or 2°	PRODUCT INTERIOR FASHION COMMUNICATION	ERASMUS
	2nd YEAR	PRODUCT INTERIOR FASHION COMMUNICATION	3° YEAR	2°/ full year *	PRODUCT INTERIOR FASHION COMMUNICATION	ERASMUS or MEDES*
	3rd YEAR	PRODUCT FASHION COMMUNICATION	1° YEAR MSC	2°	PRODUCT FASHION COMMUNICATION	ERASMUS or MEDES*
MSc STUDENTS	1st YEAR	INTERIOR	2° YEAR	1° and/or 2°	INTERIOR	ERASMUS or EXTRA UE
	1st YEAR	PRODUCT FASHION COMMUNICATION PSSD D&E	2° YEAR	2°	PRODUCT FASHION COMMUNICATION PSSD D&E	ERASMUS or EXTRA UE

What is the MEDes program?

MASTER EUROPEAN DESIGN

WHO

EACH YEAR

6

SELECTED STUDENTS

WHEN

1st Y. BSc

POLI

2nd Y. BSc

POLI

3rd Y. BSc

1st EXCHANGE

1st Y. MSc

2nd EXCHANGE

2nd Y. MSc

POLI

WHERE

GSA, GLASGOW

KONSTFACK, STOCKHOLM

ENSCI, PARIS

UNIVERSIDAD DE AVEIRO, AVEIRO

AALTO, HELSINKI

KISD, COLOGNE

PHILADELPHIAU & POLIMI INTERNATIONAL MASTER IN FASHION DESIGN

WHO	MOBILITY SCHEME		WHEN
EACH YEAR	1st YER 1st SEM.	POLI	APPLY AT
25	1st YEAR 2nd SEM.	POLIMI STUDENTS AT PHILADELPHIA U	3rd
SELECTED STUDENTS IN THE MS _c OF FASHION	2nd YEAR 1st SEM.	PHILADELPHIA STUDENTS AT POLIMI	YEAR OF BACHELOR
	2nd YEAR 2nd SEM.	POLI	

What?

ERASMUS

EXCHANGE FROM 3 UP TO 12 MONTHS **WITHIN UE** AT BSc OR MSc LEVEL

EXTRA - EU

EXCHANGE FROM 3 UP TO 12 MONTHS **OUTSIDE UE** ONLY AT MSc LEVEL

MEDES

EXCELLENCE PROGRAM WITH 2 YEARS OF EXCHANGE AT 2nd YEAR BSc AND 1st MSc LEVELS

PHILA U

PHILADELPHIA&POLIMI INTERNATIONAL **MASTER IN FASHION DESIGN**

DOUBLE DEGREES

PROGRAM TO OBTAIN A **DOUBLE DEGREE** (POLIMI & PARTNER SCHOOL) WAT MSc LEVEL

[HTTP://WWW.POLIMI.IT/STUDENTI/ESPERIENZE-ALLESTERO/MOBILITA-PER-STUDIO/DOPPIE-LAUREE/BANDO-E-MODALITA-DI-CANDIDATURA/](http://www.polimi.it/studenti/esperienze-allestero/mobilita-per-studio/doppie-lauree/bando-e-modalita-di-candidatura/)

Before the call

1. **GET INFORMED** ABOUT THE PARTNER SCHOOLS AND MAKE YOUR SELECTIONS

MANIFESTO

SELECT YOUR COURSE AND CLICK ON **INTERNAZIONALIZZAZIONE**

[HTTP://WWW.DESIGN.POLIMI.IT/MANIFESTO-DEGLI-STUDI/-](http://www.design.polimi.it/manifesto-degli-studi/)

INTERNATIONAL AREA SCHOOL

CONSULT FOR MORE DETAILS ABOUT THE **PARTNER SCHOOLS**
READ THE REPORTS FROM LAST YEARS STUDENTS

[HTTP://WWW.DESIGN.POLIMI.IT/SCUOLE-PARTNER/](http://www.design.polimi.it/scuole-partner/)

CONTACTS

PROFESSOR PROMOTING THE PARTNER SCHOOL YOU'RE INTERESTED IN

EXCHANGE OFFICE: EXCHANGE-BOVISA@POLIMI.IT

RELÉ OFFICE: RELE@POLIMI.IT

Answer the call



FROM THE 0TH TO 0RD OF FEBRUARY

ON LINE SERVICES >

MOBILITY >

INTERNATIONAL MOBILITY CANDIDATE FOR STUDY

SELECT 3 PARTNER SCHOOLS

2. ANSWER THE CALL

[HTTP://WWW.POLIMI.IT/EN/STUDENTS/EXPERIENCE-ABROAD/STUDY-MOBILITY/ERASMUS/CALL/](http://www.polimi.it/en/students/experience-abroad/study-mobility/erasmus/call/)

RISPONDI AL BANDO

[HTTP://WWW.POLIMI.IT/STUDENTI/ESPERIENZE-ALLESTERO/MOBILITA-PER-STUDIO/ERASMUS/BANDO/](http://www.polimi.it/studenti/esperienze-allestero/mobilita-per-studio/erasmus/bando/)

Necessary documents

PORTFOLIO	SHORT EXHAUSTIVE INCISIVE	TOTAL WEIGHT OF ALL FILES
	SPECIFY THE CONTEXT IN WHICH THE PROJECTS WERE IMPLEMENTED	
CV	ENGLISH	
MOTIVATIONAL LETTER	ITALIAN ENGLISH	MAX 10 MB
	SPECIFIC FOR YOUR PROJECT OF MOBILITY	

Selections



FROM THE 0TH TO 0RD OF FEBRUARY

CALENDAR WILL BE ONLINE: WWW.DESIGN.POLIMI.IT/PROGRAMMI-DI-SCAMBIO/

3. GET READY TO DO THE INTERVIEW OF SELECTION



**INTERVIEW WITH THE PROMOTER OF THE SCHOOL
SPECIFIED IN THE FIRST PREFERENCE**

THE INTERVIEW AIM IS TO VERIFY THE ATTITUDE TO TRADE
THE SCORE OF THE INTERVIEW IS ONE FOR ALL THE PREFERENCES

Ranking

4. EVERY STUDENT WILL BE EVALUATED AND WILL RECEIVE A SCORE **UP TO 60 POINTS**

30 POINTS

EXAM AVERAGE

SEE THE CALL FOR MORE INFORMATION

10 POINTS

PORTFOLIO

10 POINTS

CURRICULUM & MOTIVATIONAL LETTER

10 POINTS

INTERVIEW

DEFINED BY THE PROMOTER OF THE FIRST PREFERENCE
IT REMAINS UNCHANGED FOR THE OTHER TWO CHOICES

STUDENTS WHO HAVE NEVER PARTICIPATED IN AN EXCHANGE WILL RECEIVE A BONUS OF 3 POINTS

IN SOME CASES THE PROMOTER CAN INDICATE A STUDENT AS “NOT SUITABLE”, THIS CONDITION IMPLIES THE EXCLUSION FROM THE RANKING

Confirm the selection



FROM THE 0TH FEBRUARY TO THE
ON LINE SERVICES >
MOBILITY >
INTERNATIONAL MOBILITY CANDIDATE FOR STUDY

5. CHECK THE RANKINGS AND **CONFIRM THE SELECTION**

RANKINGS

[HTTP://WWW.POLIMI.IT/STUDENTI/ESPERIENZE-ALLESTERO/MOBILITA-PER-STUDIO/ERASMUS/BANDO/](http://www.polimi.it/studenti/esperienze-allestero/mobilita-per-studio/erasmus/bando/)

ACCEPT

ON LINE SERVICES >
MOBILITY >
INTERNATIONAL MOBILITY CANDIDATE FOR STUDY

2nd & 3rd RANKINGS

IF YOU ARE NOT SELECTED IN THE 1ST PREFERENCE, YOU MAY BE SELECTED IN THE 2nd OR 3rd ONE. **KEEP AN EYE ON THE RANKING LIST** AND CONFIRM WITHIN THE DEADLINES

[HTTP://WWW.POLIMI.IT/STUDENTI/ESPERIENZE-ALLESTERO/MOBILITA-PER-STUDIO/ERASMUS/BANDO/](http://www.polimi.it/studenti/esperienze-allestero/mobilita-per-studio/erasmus/bando/)

Exchange calendar

Contacts

EXCHANGE OFFICE

SIMONA BENVENUTO - LIVIA FABBRINI

SIMONA RODELLA - ELISA ZAPPA

exchange-bovisa@polimi.it

VIA LAMBRUSCHINI 15, BUILDING B20, CAMPUS LA MASA


OFFICE HOURS:

MONDAY, TUESDAY, WEDNESDAY, THURSDAY 10/12:30 | FRIDAY CLOSED

RELÉ OFFICE

ANNE SCHOONBRODT – CAROLINA CRUZ

rele@polimi.it



**LIFE IS A JOURNEY
BE MOBILE!**